

PRODUCT SHEET

# SESTRI COLLECTION



SUN LOUNGER  
STUDIO KLASS

**SNOC**



# SESTRI

## SUN LOUNGER

Inspired by the technical world of boating, the Sestri Collection translates functional precision into a calm, architectural language. Just as every element on a boat serves a clear purpose, Sestri builds its expression on defined lines, balanced proportions, and a measured interplay between rigor and lightness.

The collection is composed of a director chair, a sunbed, and a coffee table each designed around the same disciplined geometry and the harmony between aluminium and teak. The director chair highlights this relationship through its aluminium frame and teak arm details, while the sunbed extends the aesthetic with a clean, elongated profile. The coffee table completes the family with a quietly balanced combination of form and material.

### PRODUCT CODE

SES-17-FSCB03-AL03-LUM492 - Bisque  
SES-17-FSCB02-AL04-LUM602 - Terra  
SES-17-FSCB02-AL02-LUM701 - Nightfall

### PRODUCT DETAILS

Produced from Forest Stewardship Council (FSC) certified teak wood, powder coated aluminum suitable for outdoor conditions.

### DIMENSIONS

Height: 78 cm | 30.9"  
Width: 77 cm | 30.3"  
Depth: 213 cm | 83.8"  
Weight: 40 kg / 88.18 lbs



77  
(30,3")

43  
(16,9")



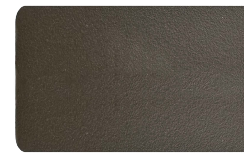
213  
(83,8")

78,5  
(30,9")



BOLD GEOMETRIES UNFOLD INTO A REFINED BALANCE OF RIGOR AND LIGHTNESS

## STRUCTURE



ALUMINUM TERRA



ALUMINUM NIGHTFALL

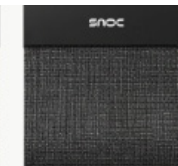


ALUMINUM BISQUE

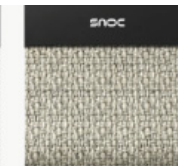
## FABRIC OPTIONS



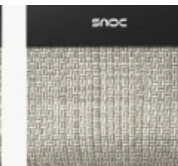
LUM254



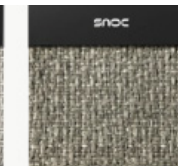
LUM255



LUM492



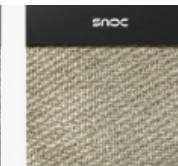
LUM512



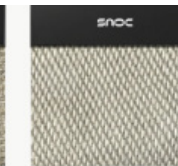
LUM602



LUM701



LUM711



LUM801



LUM802

## MAINTENANCE

Please visit [snoc-eu.com](http://snoc-eu.com) for maintenance & care instructions.



Made from FSC certified teak wood and other controlled materials.

**snoc**